

APPLICATION NOTE

GigE Firmware Update for
Mako, Manta, and Prosilica CamerasV2.1.1
2025-Feb-18

Introduction

**Firmware loader for different GigE cameras**

For technical reasons, the previous **GigE Firmware Loader** for all Allied Vision GigE cameras is being split up into separate firmware loaders for **individual camera series**. The firmware download webpage provides current files.

Alvium G1 and G5/G5X cameras are updated using **Vimba Firmware Updater** loading the corresponding firmware file.

New feature introductions and product improvements are included in new firmware releases. All users are encouraged to use the latest firmware available and complete the firmware update if necessary. To determine the current firmware version loaded onto the camera, read the camera's **DeviceFirmware** feature using **Vimba Viewer**, **GigE SampleViewer**, or third party applications such as **NI Vision Acquisition Software**.

**Downloads for firmware loaders and firmware release notes**

www.alliedvision.com/en/support/firmware-downloads

Vimba Viewer, GigE SampleViewer

www.alliedvision.com/en/products/software

**Saved camera user sets**

When new firmware contains a new feature or control, saved camera user sets or config files will be invalidated and erased!

Before loading new firmware, backup your current camera settings.

Vimba Viewer: Select the **Save Camera Settings** icon from the **Cameras** window to export the camera settings file (XML file) to the host computer.

GigE SampleViewer: Select the **Disk** icon from the **Cameras** window to export camera settings file (XML file) to the host computer.

**NOTICE****Damage to the camera firmware**

If camera cables are disconnected during a firmware update, the camera may come into a dysfunctional state.

Do not unplug GigE cables or camera power supplies during firmware updates.

Prerequisites

This is what you need for a firmware update:

- Host computer with Windows 10, Windows 8.1, or Windows 7 operating system
- Gigabit Ethernet network card (NIC) and GigE cable
- Mako, Manta, Prosilica GE, GC, GT, GB, or GX camera

Ensure that you have already installed your GigE camera and it is recognized on your system. See the chapter **Configuring the host computer** in your camera's user guide.



Camera user guides:

www.alliedvision.com/en/support/technical-documentation

Updating the firmware on your Allied Vision GigE camera

1. Download the corresponding firmware loader from www.alliedvision.com/en/support/firmware-downloads.
2. Ensure your camera is plugged in directly to the Gigabit Ethernet port on the host computer.
3. Launch the firmware loader.



Figure 1: Welcome screen

4. Click **Next**. The Firmware Loader displays a list of firmware included in the package.

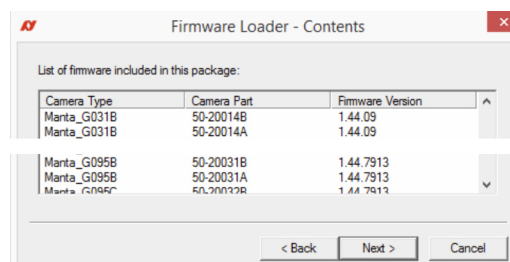


Figure 2: List of available camera updates

5. Click **Next**. Available cameras are displayed as serial numbers. Select the camera you want to update.

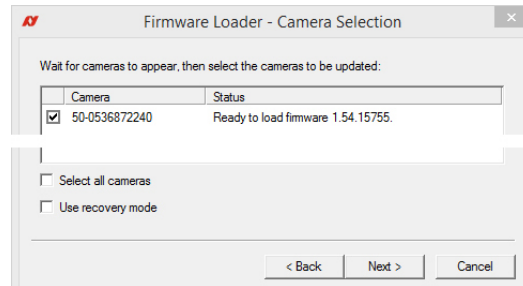


Figure 3: Camera selection for updating



Recovery Mode

Select the Use recovery mode check box if the connected GigE camera is not found by the firmware loader, or if the GigE camera is listed as unavailable. When selected, power cycle the camera to enter the **Boot Loader** mode.

6. Click **Next**.



NOTICE

Damage to the camera firmware

If camera cables are disconnected during a firmware update, the camera may come into a dysfunctional state.

Do not unplug GigE cables or camera power supplies during firmware updates.

7. Click **Upload** to start the update.
The existing firmware is erased and the new firmware is updated to the camera.

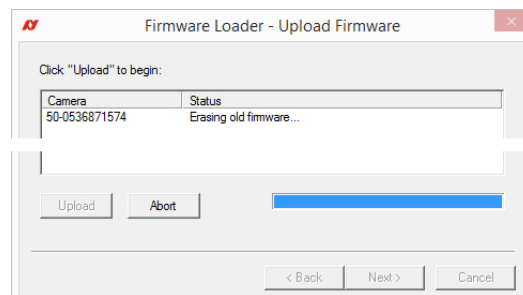


Figure 4: Upload start screen

8. The Firmware Loader displays the success status upon completion. Click **Quit** to exit the loader.

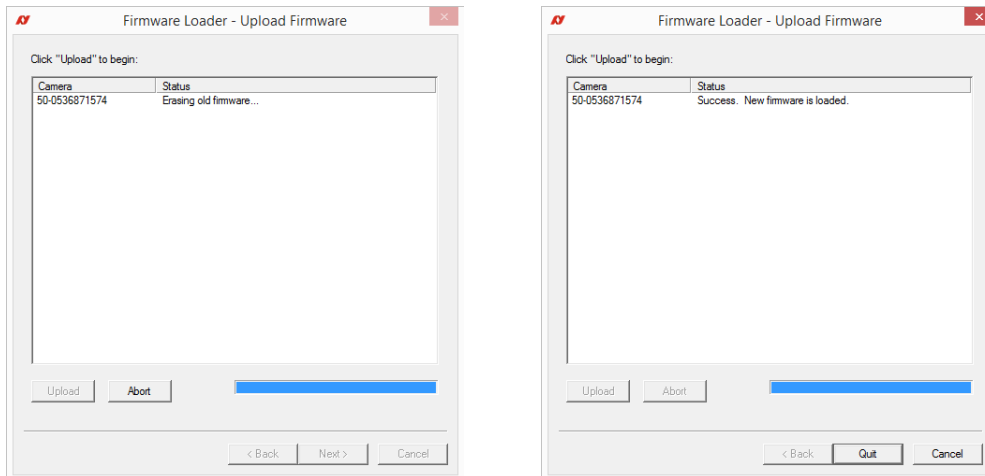


Figure 5: Status of update



Power cycle after firmware updates

You must always power cycle the camera after the firmware has been updated.



Issues with the firmware update

If you are unable to load camera firmware, or your camera is not recognized by the firmware loader when using recovery mode, please visit www.alliedvision.com/en/about-us/contact-us/technical-support-repair-/-rma for technical support.

Contact us

Website, email

General

www.alliedvision.com/en/contact
info@alliedvision.com

Distribution partners

www.alliedvision.com/en/avt-locations/avt-distributors

Support

www.alliedvision.com/en/support
www.alliedvision.com/en/about-us/contact-us/technical-support-repair-/-rma

Offices

Europe, Middle East, and Africa (Headquarters)

Allied Vision Technologies GmbH
Taschenweg 2a
07646 Stadtroda, Germany
T// +49 36428 677-0 (Reception)
T// +49 36428 677-230 (Sales)
F// +49 36428 677-28

North, Central, and South America, Canada

Allied Vision Technologies Canada Inc.
300 – 4621 Canada Way
Burnaby, BC V5G 4X8, Canada
T// +1 604 875 8855

USA

Allied Vision Technologies, Inc.
102 Pickering Way- Suite 502
Exton, PA 19341, USA
Toll-free// +1-877-USA-1394
T// +1 978 225 2030

Asia-Pacific

China

Allied Vision Technologies Shanghai Co Ltd.
B-510, Venture International Business Park
2679 Hechuan Road
Minhang District, Shanghai 201103
People's Republic of China
T// +86 21 64861133

Japan

Allied Vision Technologies
Yokohama Portside Bldg. 10F
8-1 Sakae-cho, Kanagawa-ku
Yokohama-shi, Kanagawa, 221-0052
T// +81 (0) 45 577 9527

Singapore

Allied Vision Technologies Asia Pte. Ltd
82 Playfair Rd, #07-01 D'Lithium
Singapore 368001
T// +65 6634 9027

Copyright and trademarks

All text, pictures, and graphics are protected by copyright and other laws protecting intellectual property. All content is subject to change without notice. All trademarks, logos, and brands cited in this document are property and/or copyright material of their respective owners. Use of these trademarks, logos, and brands does not imply endorsement. Copyright © 2025 Allied Vision Technologies GmbH. All rights reserved.